

CORED WIRE INJECTION EQUIPMENT Type PD71S

1. Application



The **PD71S machine** serves to introduce cored wire into molten metal in ladle during the non-furnace treatment of steel, cast-steel, cast-iron (modification, spheroidization, desulphurization, addition of alloying elements, etc.).

The equipment is designed for small and medium size metallurgical plants.

2. Technical data

Limiting outline of feeding machine		Limiting outline of control	
	one machine	one machine	two machines
height	930 mm	height	1 000 mm
width	450 mm	width	600 mm
length	960 mm	length	300 mm
mass	360 kg	mass	50 kg
Power installed	2,2 kW		
Power supply	3x380 V (3x400V), 50 Hz		
Electric drive	Three-phase, asynchronous motors		
Speed control	Frequency converter		

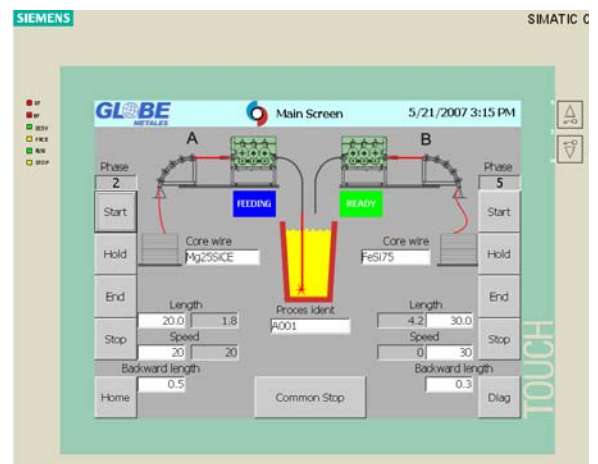
3. Operation Parameters

Diameter of wires injected:	- 5 mm ÷ 13 mm
Speed of wire injection:	- 1 m/min ÷ 100 m/min
Speed control:	- 1 m/min step
Setting range of meters:	- 000.1 ÷ 999.9 m, every 0.1 m
Number of feeding strands:	- 1
Number of powered rolls in one strand:	- 3

4. Control

Type PD71S is equipped with PLC. Control of the feeding process is on the keyboard on the front Touch Panel of the cubic control. When two machines are used, the PD71S screen looks like the adjacent exhibit. Control bottoms are located on the machine close to the powered rolls. After the side-shield cover is opened, the PLC control is inactive; at this point, manual control can be performed using the bottoms close to the rolls.

The desired length of wire to be fed into the ladle and velocity are settings on the keyboard (windows "LENGTH" and "SPEED"). During the feeding process, parameters are displayed on monitor's screens which are located on the front panel of the cubic control.



REV-Aug/07